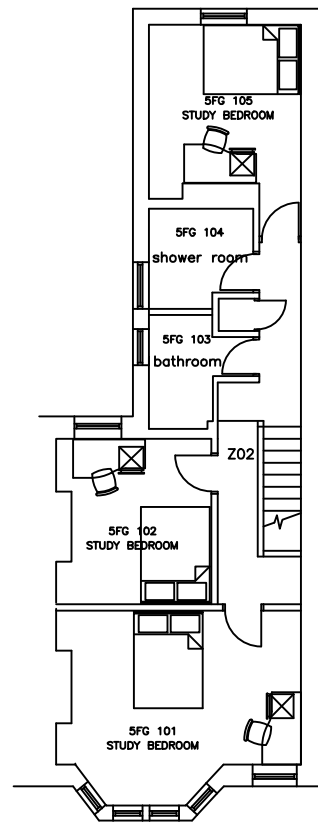



GROUND FLOOR PLAN



FIRST FLOOR PLAN

 University of South Wales Prifysgol De Cymru		ESTATES & FACILITIES	
		TREForest PORTYRFROD CF31 10L TEL: 01495 868445 FAX: 01495 862738	
CAMPUS			
TREForest - MAIN CAMPUS			
TITLE			
5 FOREST GROVE			
DRAWING TITLE			
FLOOR PLAN			
DATE	SCALE	DRAWN	CHECKED
AUG 2010	1:100	SW	GK
DRAWING NO.		REV	
CAD FILE			